

KILLARK®

GZ

Next-Generation Operators

Setting New Standards of Quality and Reliability



www.hubbell-killark.com



Harsh & Hazardous

GZ SERIES

CUSTOM CONTROL PANEL OPERATORS



North American Standards:
 Class I, Div. 1, Groups B, C, D
 Class II, Div. 1, Groups E, F, G
 Class III
 Type 4X

IECEX/ATEX Ratings:
 II 2G Ex db IIC Gb
 II 2D Ex tb IIC Db
 IP66W



FEATURES-SPECIFICATIONS

Applications

GZ Series Control Panel Operators are designed for use in hazardous locations when installed in suitable enclosures meeting the Area Classification requirements.

Features

100% gauged and inspected aluminum bushings for 3/4 - 14 NPSM thread as standard and M22 x 1.5 Metric upon request. Available in bushing lengths .98" [25mm], 1.57" [40mm], 2.24" [57mm]

Operator Offerings:

Momentary Push Buttons, LED Pilot Lights, Illuminated Push Buttons, Mushroom Head Push Buttons, Rotary Selector Switches, Potentiometers

Ambient Operating Temperature:

-50°C [-58°F] to +60°C [140°F]

PUSH BUTTON ELECTRICAL RATINGS

RATED VOLTAGE UI 500V - RATED CURRENT ITH 10A

	VOLTAGE	CURRENT
BREAKING CAPACITY FOR AC 15	220V	10A
	380V	7.5A
	500V	5A
	VOLTAGE	CURRENT
BREAKING CAPACITY FOR DC 13	24V	2.75A
	60V	1.10A
	110V	0.55A
	220V	0.27A

ROTARY SWITCH ELECTRICAL RATINGS

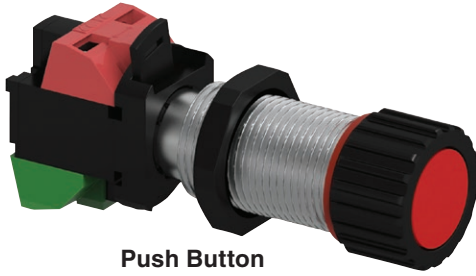
RATED VOLTAGE 600V - RATED CURRENT 20A

	VOLTAGE	CURRENT
AC-3	220-240V	3.0kW
	380-440V	5.5kW
AC-15	220-240V	5A
	380-440V	4A
AC-22A	220-240V	20A
	380-440V	20A
AC-23	220-240V	3.7kW
	380-440V	7.5kW

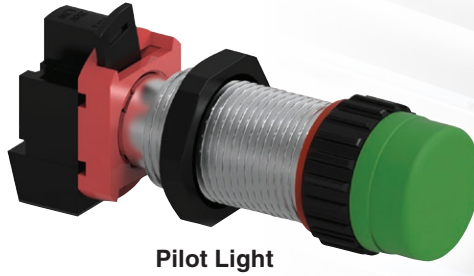
BREAKING CAPACITY FOR DC

	24V	48V	60V	110V
Resistive loads T<1ms	20A	12A	4.5A	1A
Inductive loads 50ms	12A	2A	1A	0.4A

MOMENTARY AND ILLUMINATED PUSH BUTTONS



Push Button



Pilot Light



Illuminated Push Button

GZ SINGLE PUSH BUTTON (MOMENTARY CONTACT)

CATALOG NUMBER			BUTTON COLOR	CONTACT TYPE	DIAGRAM
SHORT 0.94" [25MM] THD. LENGTH	LONG 1.57" [40MM] THD. LENGTH	EXTENDED 2.24" [57MM] THD. LENGTH			
GZ21-RZ3	GZ1-RX3	GZL1R3	RED	1 N.O./1 N.C.	
GZ21-GZ3	GZ1-GX3	GZL1G3	GREEN		
GZ21-KZ3	GZ1-KX3	GZL1K3	BLACK		

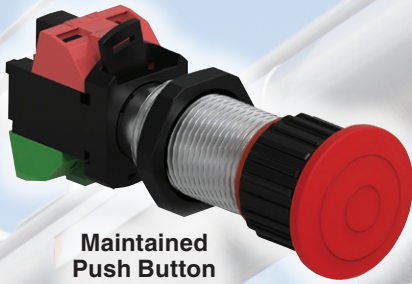
GZ PILOT LIGHTS

CATALOG NUMBER			COLOR	VOLTAGE	DIAGRAM
SHORT 0.94" [25MM] THD.	LONG 1.57" [40MM] THD.	EXTENDED 2.24" [57MM] THD.			
GZ23-A23	GZB3-A23	GZL3A23	AMBER	120V AC/DC LED	
GZ23-B23	GZB3-B23	GZL3B23	BLUE		
GZ23-C23	GZB3-C23	GZL3C23	CLEAR		
GZ23-G23	GZB3-G23	GZL3G23	GREEN		
GZ23-R23	GZB3-R23	GZL3R23	RED		
GZ23-A4	GZB3-A4	GZL3A4	AMBER	24V AC/DC LED	
GZ23-B4	GZB3-B4	GZL3B4	BLUE		
GZ23-C4	GZB3-C4	GZL3C4	CLEAR		
GZ23-G4	GZB3-G4	GZL3G4	GREEN		
GZ23-R4	GZB3-R4	GZL3R4	RED		
GZ23-A24	GZB3-A24	GZL3A24	AMBER	220/240V AC LED	
GZ23-B24	GZB3-B24	GZL3B24	BLUE		
GZ23-C24	GZB3-C24	GZL3C24	CLEAR		
GZ23-G24	GZB3-G24	GZL3G24	GREEN		
GZ23-R24	GZB3-R24	GZL3R24	RED		

GZ ILLUMINATED PUSH BUTTON

SHORT 0.94" [25MM] THD.	LONG 1.57" [40MM] THD.	EXTENDED 2.24" [57MM] THD.	COLOR	CONTACT TYPE VOLTAGE	DIAGRAM
GZ24-A233	GZB4-A233	GZL4A233	AMBER	1 N.O./1 N.C. 120V AC/DC LED	
GZ24-G233	GZB4-G233	GZL4G233	GREEN		
GZ24-R233	GZB4-R233	GZL4R233	RED		

MAINTAINED MUSHROOM HEAD PUSH BUTTONS



Maintained Push Button Pull Release



Maintained Push Button Twist Release



Maintained Push Button Key Release

GZ SINGLE PUSH BUTTON (MAINTAINED CONTACT) MUSHROOM HEAD PUSH – PULL RELEASE

SHORT 0.94" [25MM] THD.	LONG 1.57" [40MM] THD.	EXTENDED 2.24" [57MM] THD.	COLOR	CONTACT TYPE	DIAGRAM
GZMP21-RM3	GZMP1-RM3	GZMPL1R3	RED	1 N.O./1 N.C.	

GZ SINGLE PUSH BUTTON (MAINTAINED CONTACT) MUSHROOM HEAD PUSH – TWIST RELEASE

SHORT 0.94" [25MM] THD.	LONG 1.57" [40MM] THD.	EXTENDED 2.24" [57MM] THD.	COLOR	CONTACT TYPE	DIAGRAM
GZMT21-RM3	GZMT1-RM3	GZMTL1R3	RED	1 N.O./1 N.C.	

GZ SINGLE PUSH BUTTON (MAINTAINED CONTACT) MUSHROOM HEAD PUSH – KEY RELEASE

SHORT 0.94" [25MM] THD.	LONG 1.57" [40MM] THD.	EXTENDED 2.24" [57MM] THD.	COLOR	CONTACT TYPE	DIAGRAM
GZMK21-RM3	GZMK1-RM3	GZMKL1R3	RED	1 N.O./1 N.C.	

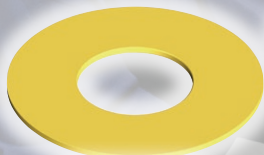
ACCESSORIES



GZMRPPBLO



GZMRTPBLO



GZMRTPBL



GZPBMDHLO



GZPBMMRHLO

MOMENTARY PUSH BUTTON ACCESSORIES

DEPRESSED LOCKOUT FOR GZ21, GZ1, GZL

GZPBMDHLO

COVERED LOCKOUT FOR GZ21, GZ1, GZL

GZPBMMRHLO

MUSHROOM BUTTON ACCESSORIES

YELLOW BACKPLATE	LOCKOUT FOR GXMP* (PULL RELEASE)	LOCKOUT FOR GXMP* (TWIST RELEASE)
GZMRTPBL	GZMRPPBLO	GZMRTPBLO



GZSSLO

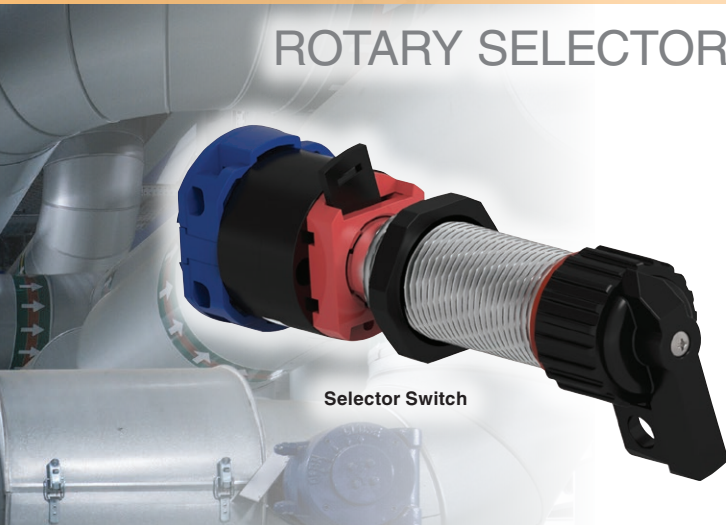
SELECTOR SWITCH ACCESSORY

LOCKOUT FOR GZ25, GZ5, GZL5 & SPRING RETURN TYPES

GZSSLO

*Stainless steel lockouts allow button to be locked out in either position.

ROTARY SELECTOR SWITCHES 2 & 3 POSITION



Selector Switch

Selector Switches supplied with legend plates: OFF-ON for 2 Position, HAND-OFF-AUTO for 3 Positions.


Legend Plates for Push Buttons can be purchased separately.

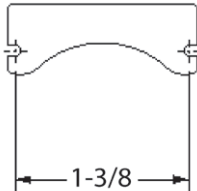
GZ 2 POSITION SELECTOR SWITCH MAINTAINED CONTACT					
CATALOG NUMBER			CONTACT ARRANGEMENT		TYPE OF OPERATION
SHORT 0.94" [25MM] THD.	LONG 1.57" [40MM] THD.	EXTENDED 2.24" [57MM] THD.	POSITION		
			LEFT	RIGHT	
GZ25-2A3	GZ5-2A3	GZL52A3			2 POS. ONE POLE DOUBLE THROW
GZ25-2A6	GZ5-2A6	GZL52A6			2 POS. TWO POLE DOUBLE THROW

GZ 3 POSITION SELECTOR SWITCH MAINTAINED CONTACT						
CATALOG NUMBER			CONTACT ARRANGEMENT			TYPE OF OPERATION
SHORT 0.94" [25MM] THD. LENGTH	LONG 1.57" [40MM] THD. LENGTH	EXTENDED 2.24" [57MM] THD. LENGTH	POSITION			
			LEFT	CENTER	RIGHT	
GZ25-3C3	GZ5-3C3	GZL53C3				3 POS. ONE POLE DOUBLE THROW w/ OFF
GZ25-3C8	GZ5-3C8	GZL53C8				3 POS. TWO POLE DOUBLE THROW w/ OFF
GZ25-3G3	GZ5-3G3	GZL53G3				3 POS. ONE POLE DOUBLE THROW w/o OFF

Contact Factory for Keyed and Spring Returned options

CUSTOM LEGEND PLATES (MOUNTING SCREWS INCLUDED)		
CATALOG NUMBER & DESCRIPTION		
PB & PL LEGEND PLATES	2 POS. SEL. SWT. LEGEND PLATES	3 POS. SEL. SWT. LEGEND PLATES
XCSNP-ON	XCSNP-ON-OFF	XCSNP-HAND-OFF-AUT
XCSNP-OFF	XCSNP-OFF-ON	XCSNP-AUT-OFF-HAND
XCSNP-START	XCSNP-OFF-REMOTE	XCSNP-HAND-OFF-REM
XCSNP-STOP	XCSNP-START-STOP	XCSNP-STP-RUN-STRT
XCSNP-ESTOP	XCSNP-UP-DOWN	XCSNP-FWD-OFF-REV
XCSNP-UP	XCSNP-RAISE-LOWER	XCSNP-REV-OFF-FWD
XCSNP-DOWN	XCSNP-HIGH-LOW	XCSNP-RUN-OFF-JOG
XCSNP-FAST	XCSNP-SLOW-FAST	XCSNP-JOG-OFF-RUN
XCSNP-SLOW	XCSNP-START-JOG	XCSNP-SLOW-OFF-FST
XCSNP-IN	XCSNP-RUN-JOG	XCSNP-LOW-OFF-HIGH
XCSNP-OUT	XCSNP-JOG-RUN	XCSNP-RAS-OFF-LOWR
XCSNP-RAISE	XCSNP-FWD-REV	XCSNP-LOCL-OFF-REM
XCSNP-LOWER	XCSNP-HAND-AUTO	XCSNP-1-OFF-2
XCSNP-HIGH	XCSNP-AUTO-HAND	XCSNP-UP-OFF-DOWN
XCSNP-LOW	XCSNP-MANUAL-AUTO	XCSNP-BLANK-3P*
XCSNP-OPEN	XCSNP-SLOW-FAST	
XCSNP-CLOSE	XCSNP-OPEN-CLOSE	
XCSNP-FORWARD	XCSNP-BLANK-2P*	
XCSNP-REVERSE		
XCSNP-READY		
XCSNP-RUN		
XCSNP-RESET		
XCSNP-JOG		
XCSNP-INCH		
XCSNP-TEST		
XCSNP-POWER-ON		
XCSNP-JOG-FORWARD		
XCSNP-JOG-REVERSE		
XCSNP-MOTOR-RUN		
XCSNP-MOTOR-STOP		
XCSNP-PUSH-TO-TEST		
XCSNP-BLANK*		





Drilling Instructions
(if holes not existing)
Drill #44(.086 Dia)
x 3/16 deep. Do not break
through cover.
Install with thread cutting
screws supplied.

* For special markings order blank legend plate and specify marking.



KILLARK[®]

2112 Fenton Logistics Park Blvd.
Fenton, MO 63026
TEL: (314) 531-0460 FAX: (314) 531-7164
www.hubbell-killark.com • killarkinfo@hubbell.com

Hubbell Canada LP

870 Brock Road South
Pickering, Ontario L1W 1Z8
(905) 839-1138
infohclp@hubbell-canada.com

Hubbell Products Mexico

Calle 5 Sur No. 105 Col. Parque
Ind. Toluca 2000
Toluca Edo. Mex. CP 50200
Tel: (01 52) 559-151-9999
info@hubbell.com.mx

Hubbell[®] Construction and Energy

A Division of Hubbell, Inc.
HKPR-GZ 10-19 © Killark, 2019